

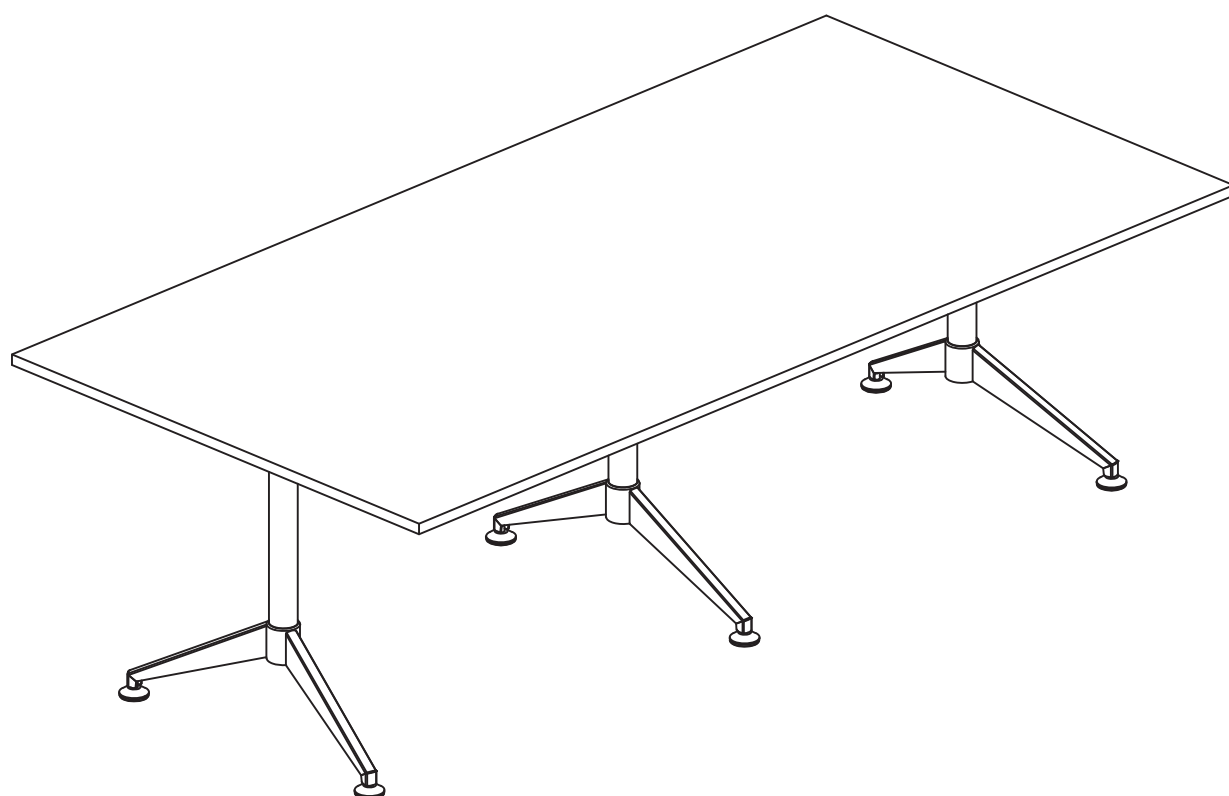
# **J.BURROWS**

• • • • •

## Assembly Instructions

STILFORD MEET TBL 240X120 2CTN

JBSTMEET24



## Important

Estimated Assemble Time:60min



MORE THAN 1 PERSON  
IS REQUIRED TO SAFELY  
ASSEMBLE THE ITEM

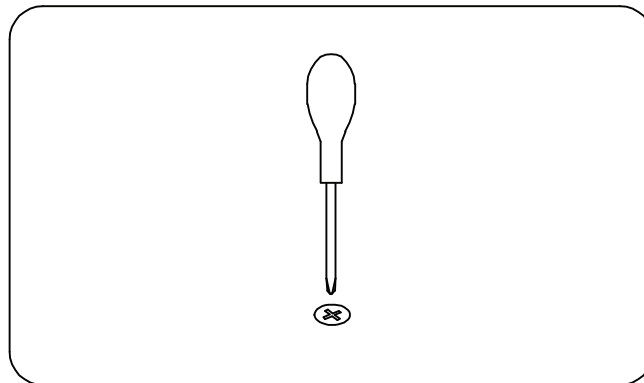


HOTLINE



ASSEMBLE ON A CLEAN,  
FLAT SURFACE

## Tools Required For Assembly



Please check you have all hardware components before assembling.

If you are missing any hardware components from the [Hardware List](#) please contact My Zone on

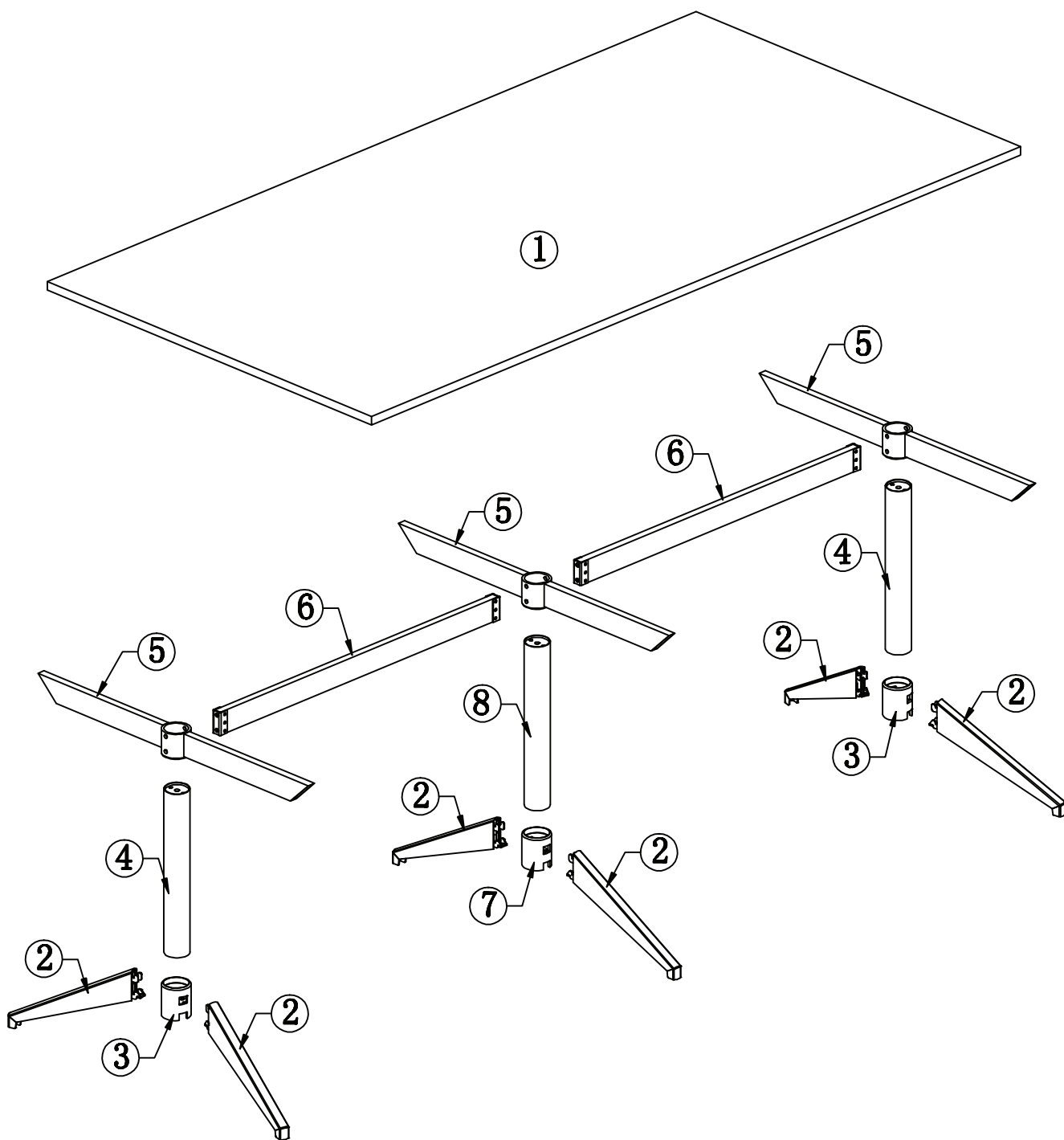
Tel:(03)9310 3011 or Email:[hardware@myzone.net.au](mailto:hardware@myzone.net.au)

Please ensure you have the name of the item,store purchased from,hardware part required and quantity

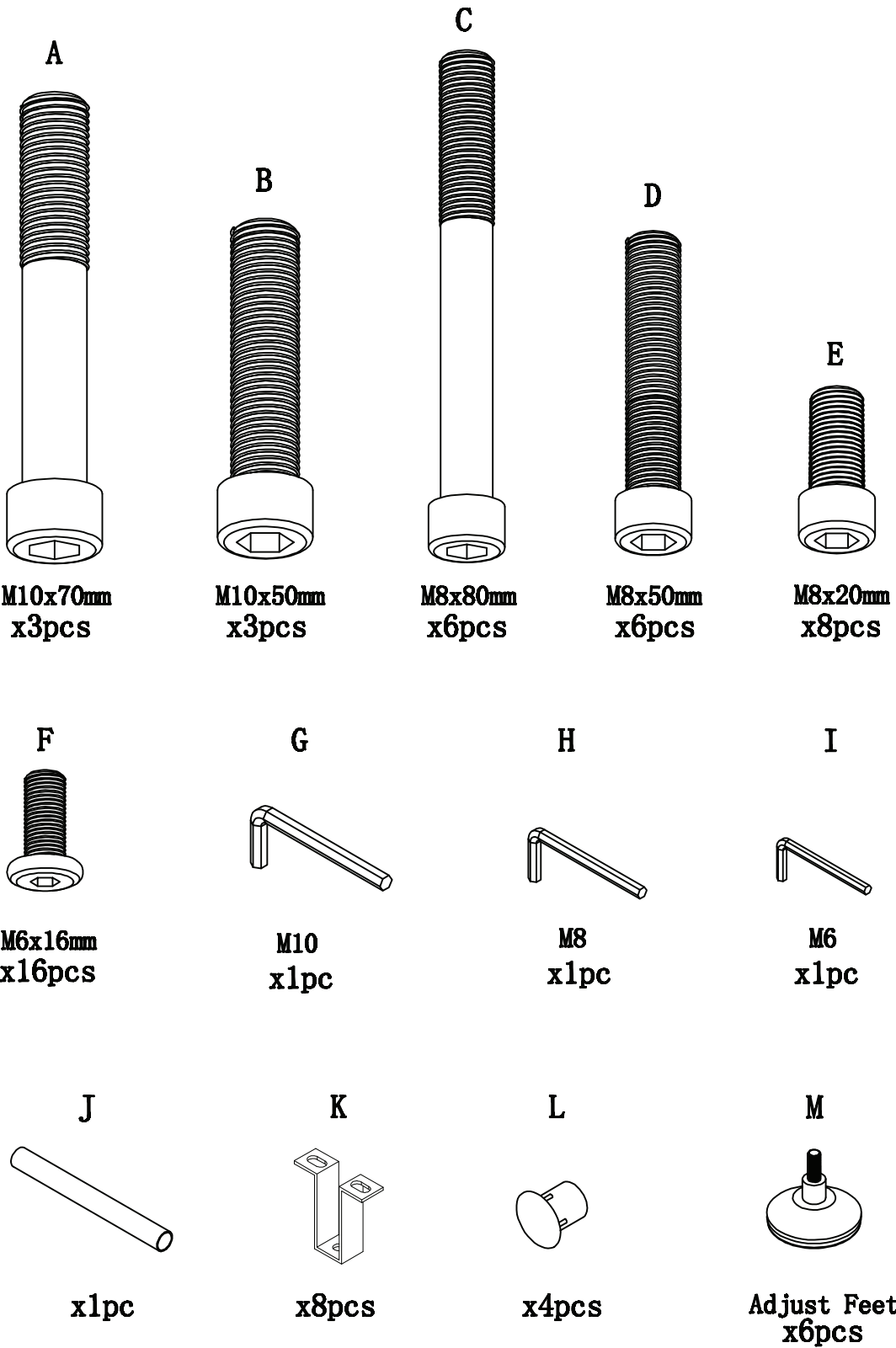
If you are missing any panels from the [Panel List](#) Please contact your store of purchase.

Please retain your receipt to validate warranty.Enjoy your new purchase!

# Part List

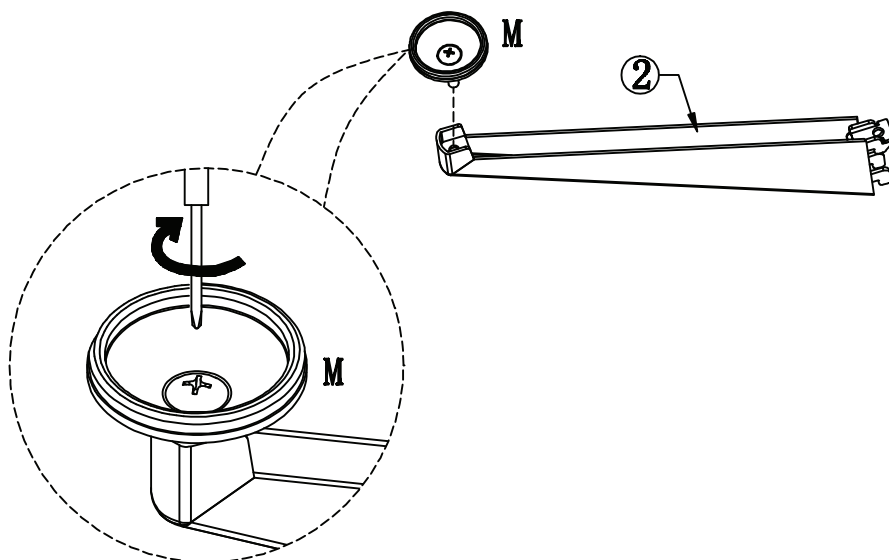


# Hardware List



## Step 1

6X

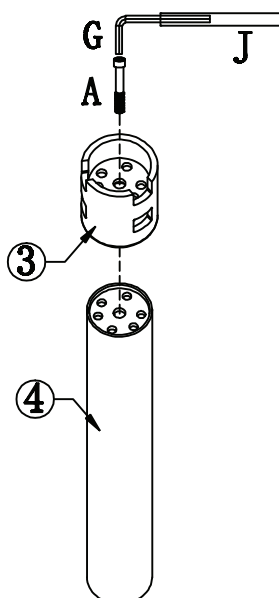


M x6



## Step 2

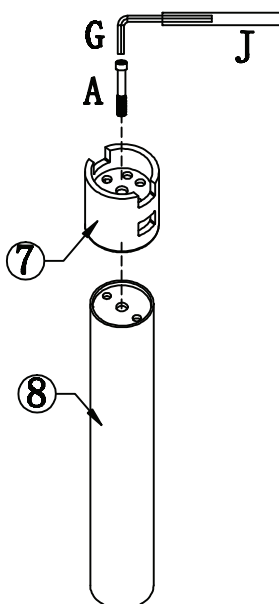
2X



Note: Do not tighten the screw A fully until you have completed Step 8 !

A	x2	G	x1	J	x1

## Step 3



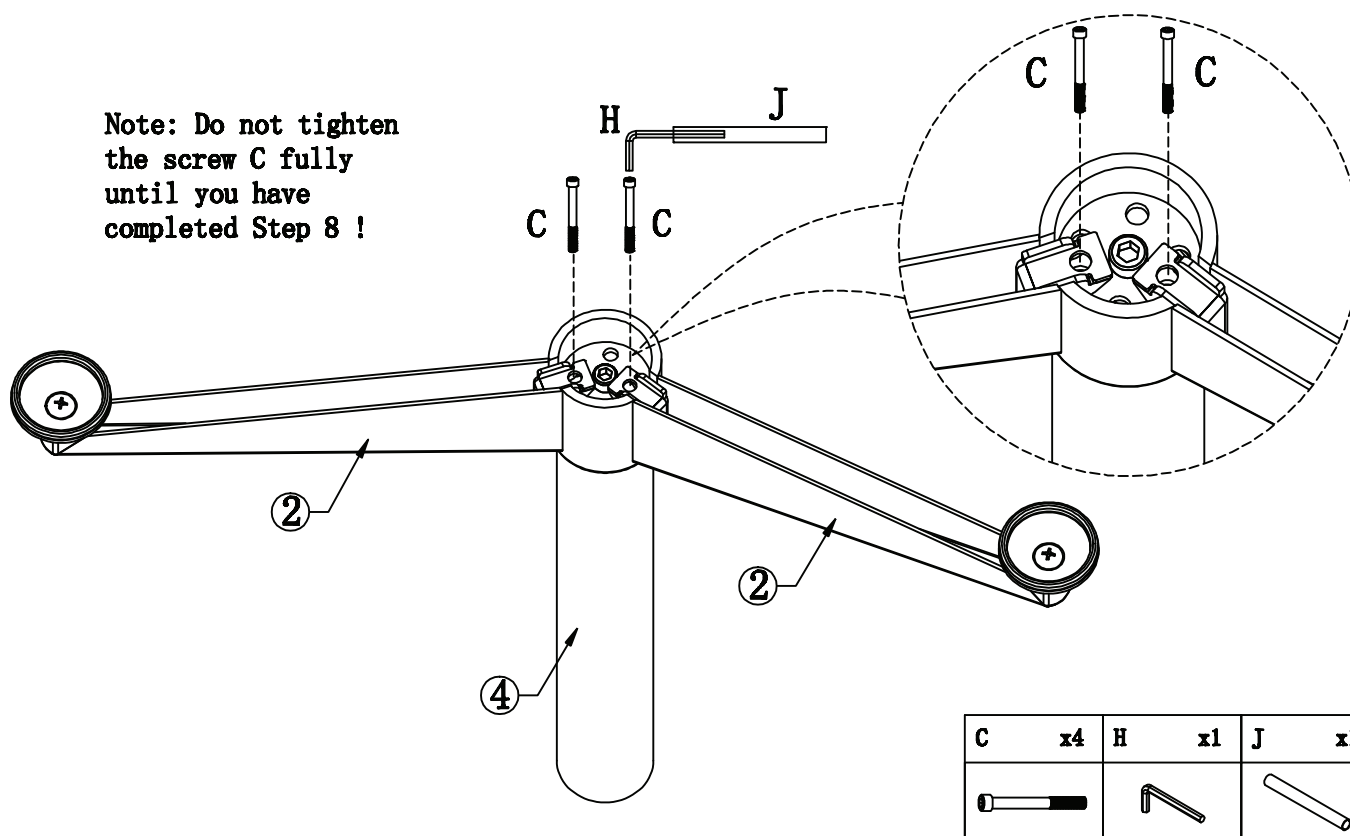
Note: Do not tighten the screw A fully until you have completed Step 8 !

A	x1	G	x1	J	x1

## Step 4

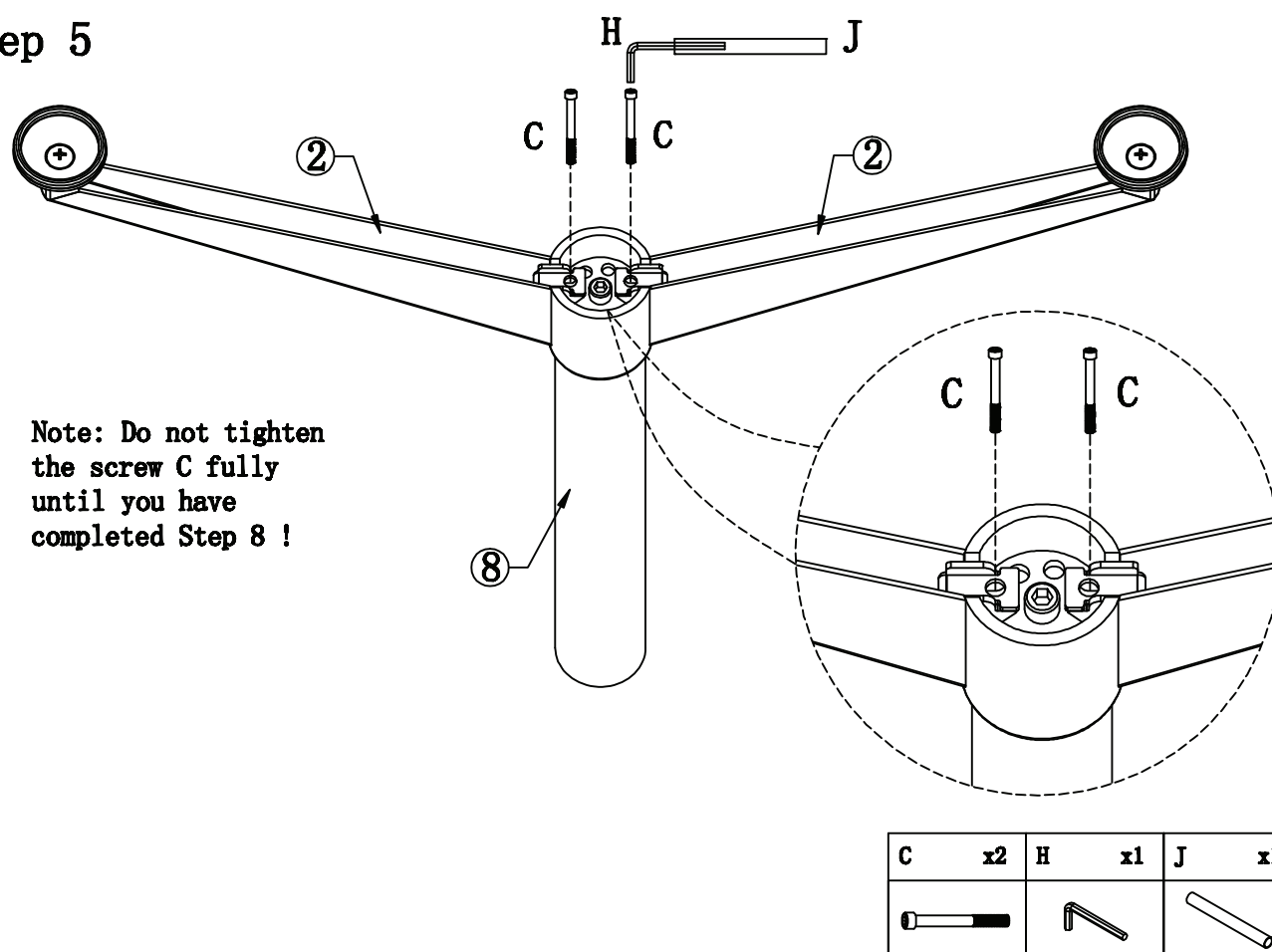
2X

Note: Do not tighten the screw C fully until you have completed Step 8 !

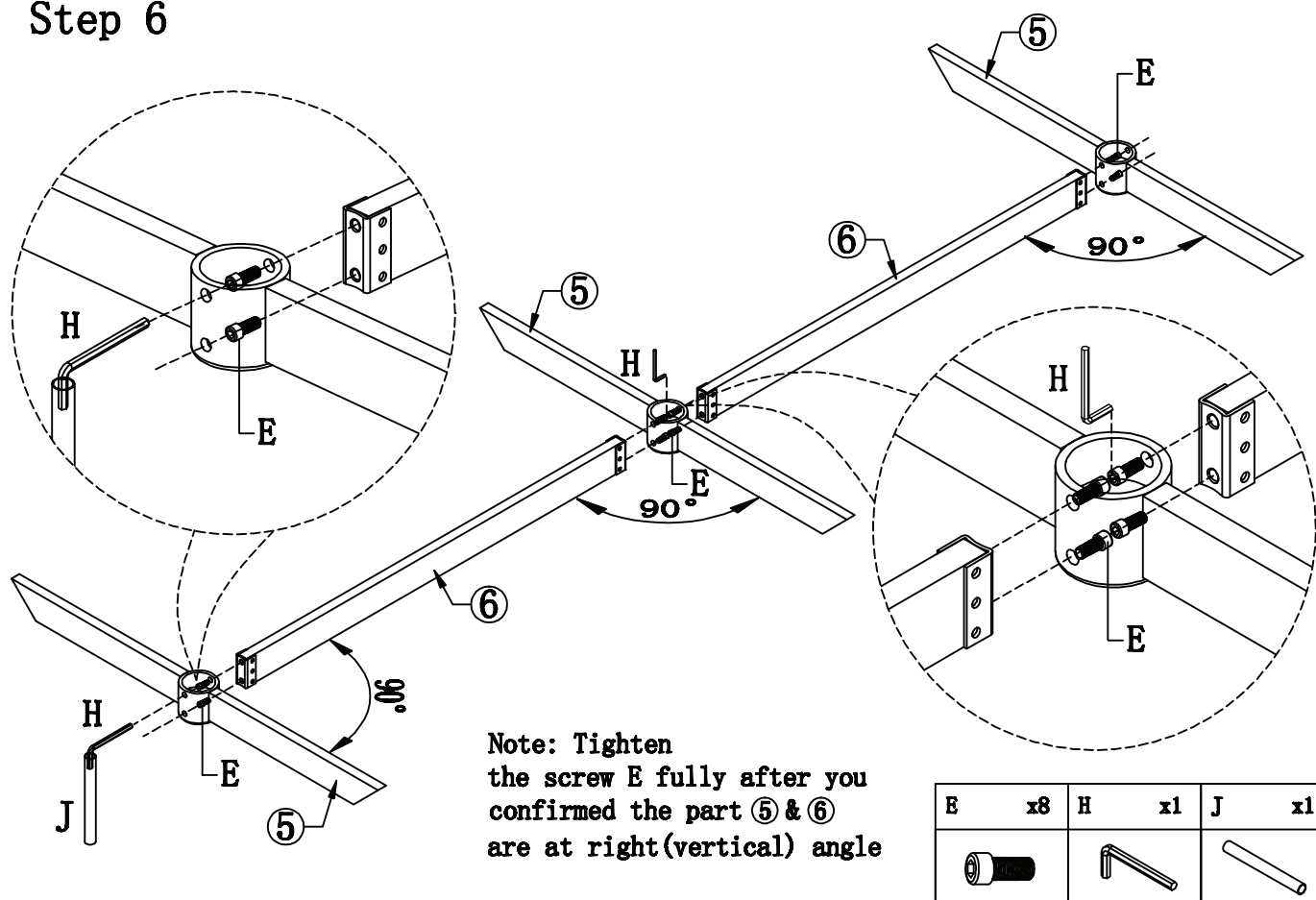


## Step 5

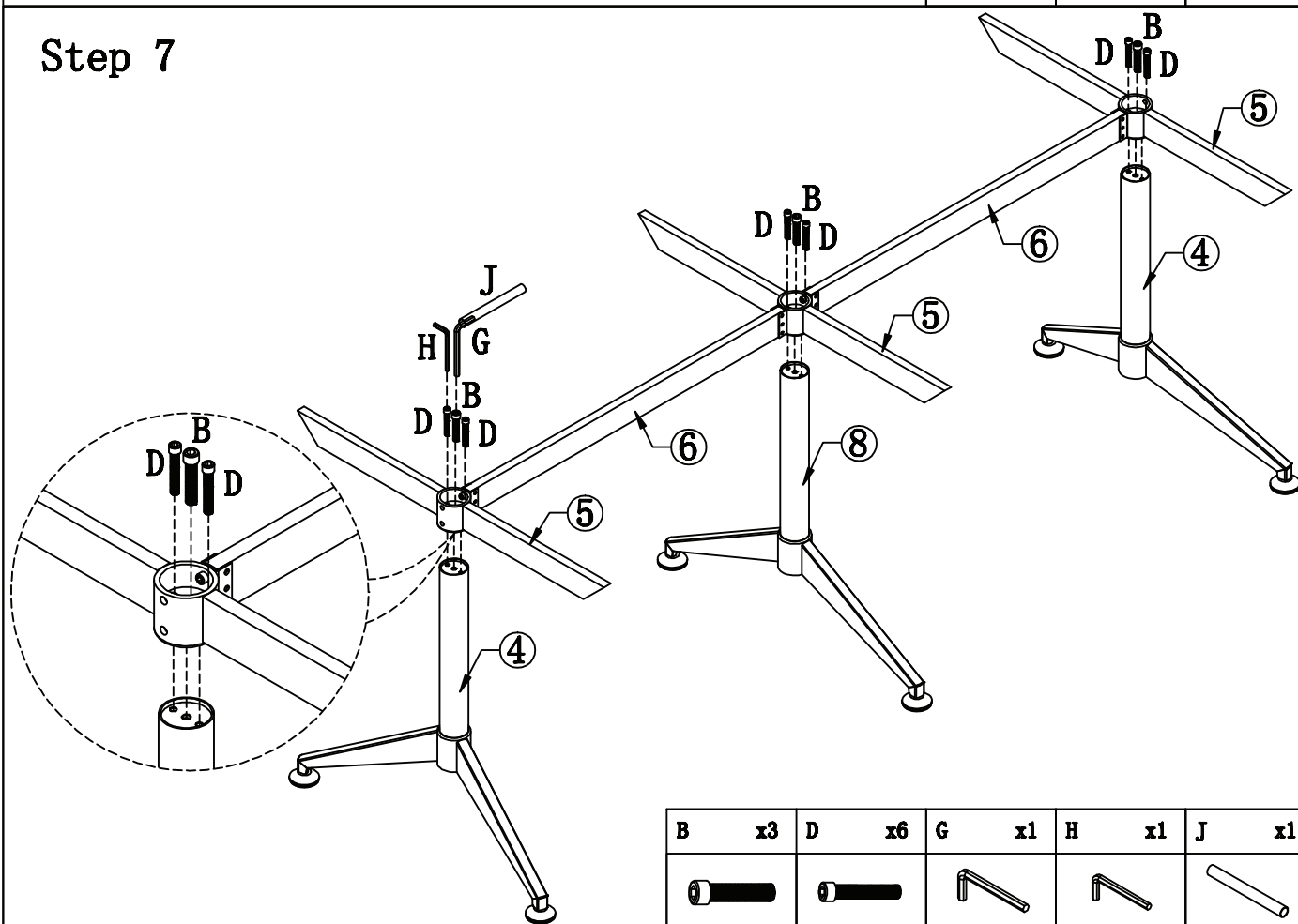
Note: Do not tighten the screw C fully until you have completed Step 8 !



## Step 6

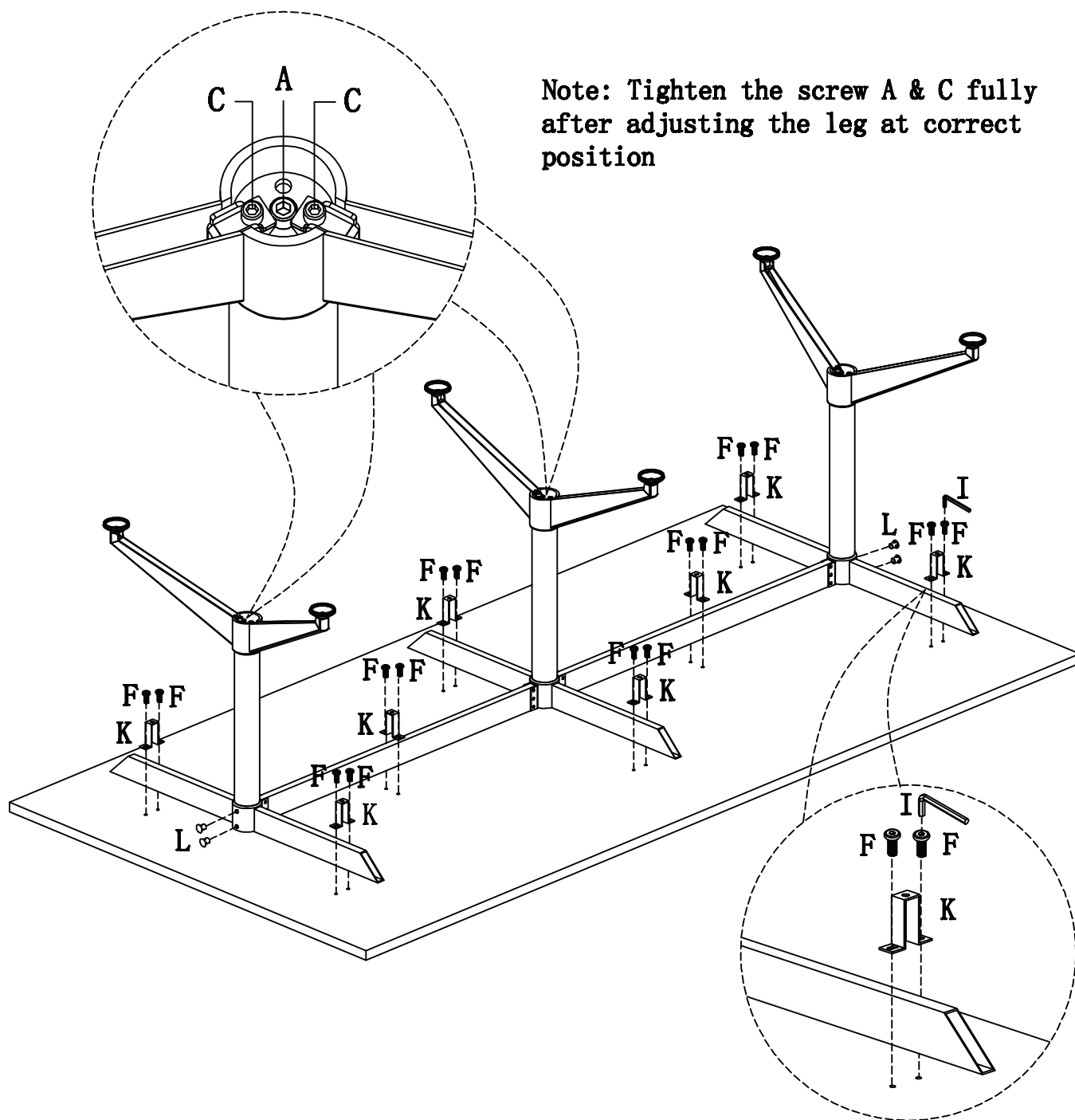


## Step 7



## Step 8

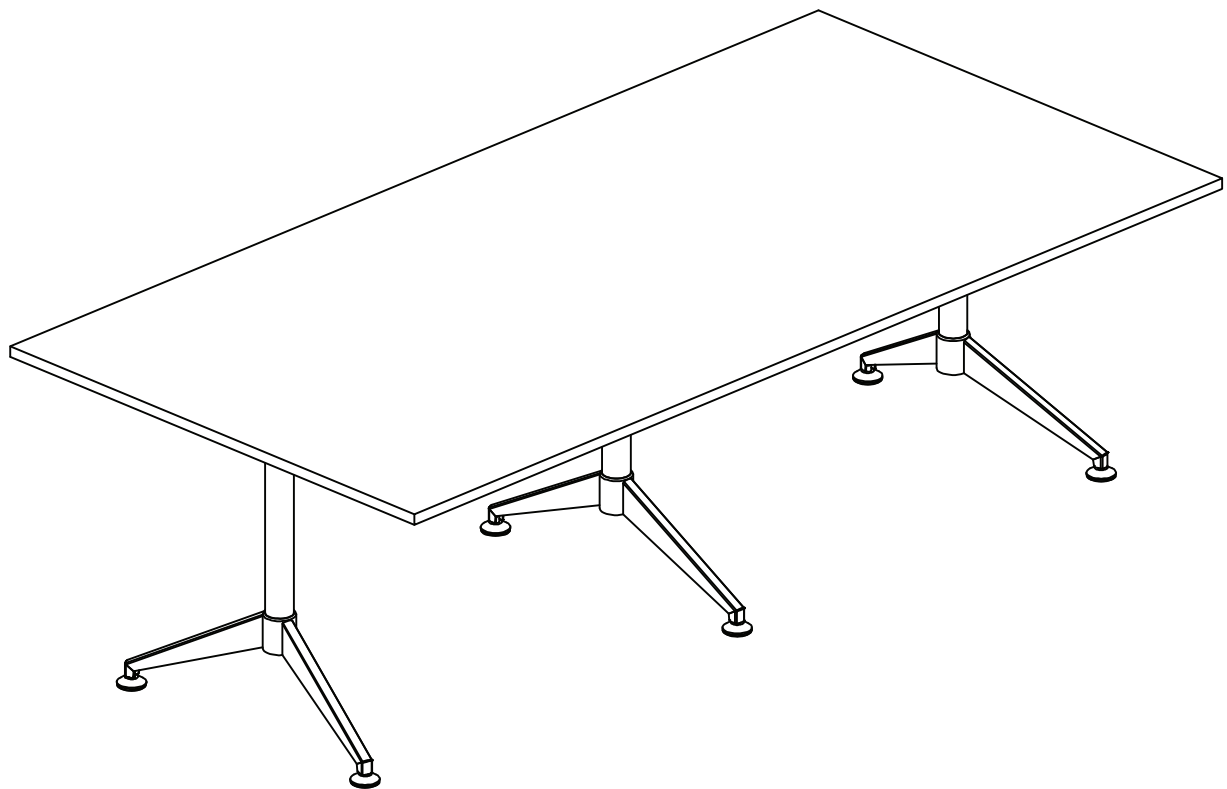
Note: Tighten the screw A & C fully after adjusting the leg at correct position



K	x8	L	x4	F	x16	I	x1



**Maximum Load Capacity:50kg**



**Your STILFORD MEET TBL 240X120 2CTN is now complete and ready for use**

**Officeworks Superstores Pty Ltd. | 236-262 East Boundary Road | East Bentleigh | 3165 AUSTRALIA.**